



**PROFESSIONAL SYSTEMS  
FOR FAÇADE PROTECTION  
AND DÉCORATION**



**SILOXANE SYSTEMS**  
HIGH-TECH SILOXANE SYSTEMS FOR THE PROTECTION  
OF NEW OR ALREADY TREATED SURFACES



**ARREGHINI®**  
ITALIAN PAINTS SINCE 1950





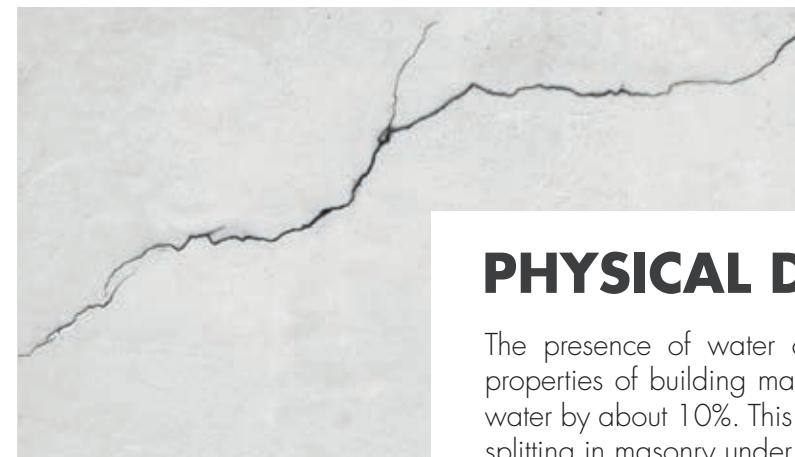


# PROTECTION OF PLASTERS OUTDOORS

The façades of buildings are exposed to the effects of weather, sun, humidity and aggressive air pollution, which are the main causes of deterioration and loss of colour of exterior plasters. For these reasons it is important to protect the façades through adequate and regular maintenance to ensure the integrity of the most superficial layer, contributing to the reduction of energy consumption and the healthiness of the interior environment, thus improving living comfort.

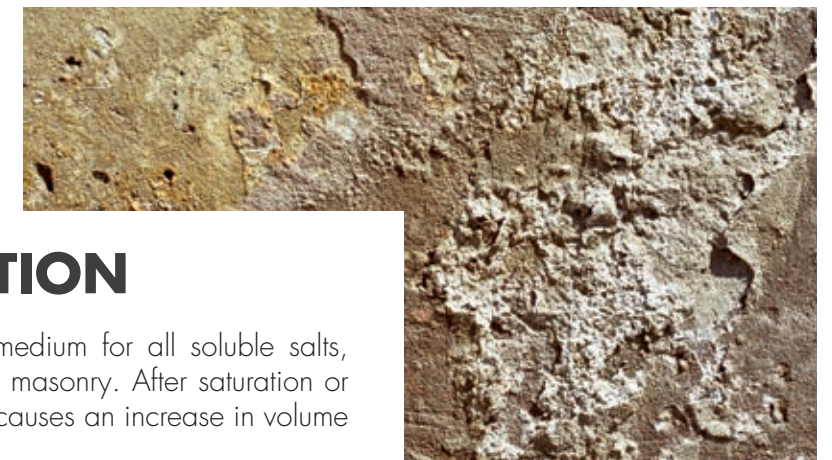
The assessment element to be taken into account for effective and lasting protection of structures is the moisture reaction of coatings and building materials. First of all, it is important to identify the different causes that lead to the formation of moisture and to check their degree of harmfulness.

Moisture in walls is not a threat if present in small quantities. High quantities, on the other hand, are highly damaging as they carry polluting gases from the atmosphere or soil and dissolve the salts contained in the very constituents of the masonry, causing the impoverishment of the building materials and the degradation of the plaster.



## PHYSICAL DEGRADATION

The presence of water can change, and in extreme cases destroy, the properties of building materials. Frost, for example, increases the volume of water by about 10%. This expansion in capillary spaces causes cracking and splitting in masonry under certain conditions.



## CHEMICAL DEGRADATION

Excessive internal moisture, which acts as a medium for all soluble salts, causes a deterioration in the consistency of the masonry. After saturation or evaporation of the water, crystallisation of salts causes an increase in volume to the point of causing cracks in the structure.



## BIOLOGICAL DEGRADATION

Persistent dampness inside walls causes mould, lichen, algae, fungi and moss to grow and proliferate. The establishment of these micro-organisms can lead to the disintegration of the building material and a reduction in living comfort when the phenomenon occurs indoors.



## LOSS OF THERMAL INSULATION

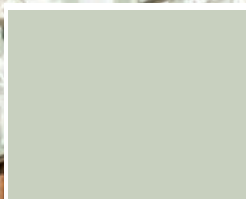
An excessively damp wall can lose up to 50% of its insulating power compared to a dry wall. This considerable heat loss leads to reduced living comfort and higher energy costs.



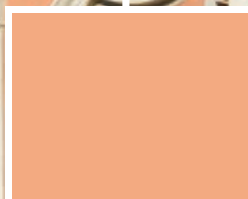
# THE ROLE OF COLOUR IN ARCHITECTURE



Area 115 A - 04



Tucano P309



Spazio 100 E - 08

## COLOUR BETWEEN UTILITY AND DESIGN

The façade is a real calling card for the building, defining its style and evoking its atmosphere. The choice of colour is of fundamental importance in determining the character of the domestic space and enhancing the chromatic relationship between the house itself and its environment, whether it is surrounded by a garden or set in an urban context. Architecture gives colour a greater role in defining spaces, making full use of the effects it can produce and seeking harmony and balance between environments. The colour used outdoors is a distinctive element that has an essential influence on the perception of the environment. The right choice of colour for the façade is of paramount importance, as it allows the building to blend in with the surrounding landscape while maintaining its original style.

CAP Arreghini offers professionals a selection of colours for exteriors in the **AREA 115**, **SPAZIO 100** and **TUCANO** colour ranges, making it easy to obtain refined colour combinations, effective from a perceptive standpoint and ideal for any architectural style.



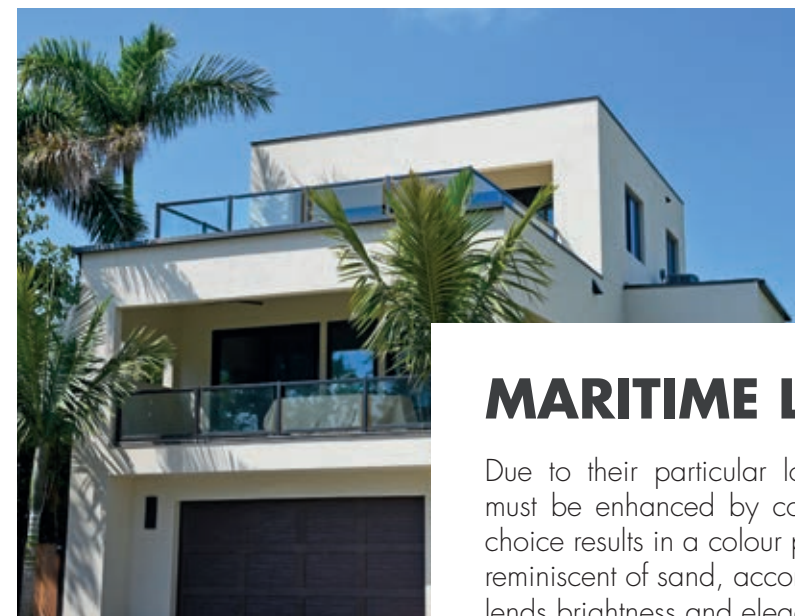
## HISTORICAL CENTRES

In historic city centres, colour has a social and cultural value, so when selecting colour it is important to respect the constraints imposed by building regulations in order to achieve chromatic coherence between the building and its context. Where traces of the original colouring are detectable and recognisable, these must be reproduced when the building is repainted. Otherwise, the colours that can be used are indicated in the Colour Plan.



## SUBURBAN AREAS

Houses or buildings located in isolated places or outside historic centres do not have any constraints to respect, but they must be harmoniously integrated into their surroundings. The colours that best suit their decoration are those that recall nature, in both warm and cool tones.



## MARITIME LOCATIONS

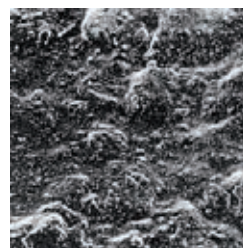
Due to their particular location, houses and buildings in maritime areas must be enhanced by colours that evoke the nature they are part of. The choice results in a colour palette that touches on all shades of blue and tones reminiscent of sand, accompanied by white, which with its timeless brilliance lends brightness and elegance to the structure.



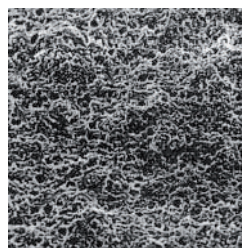
# SILOXANE PAINTS

## HIGH TECHNOLOGY AND TOP PERFORMANCE

Siloxane paints are an innovative solution offering a very high level of performance, combining excellent breathability and weather resistance with high water repellency. Siloxane resins are able to produce a porous and at the same time water-repellent structure and are therefore the ideal solution for painting mineral substrates of external façades, making it possible to eliminate the penetration of water into the walls and at the same time facilitating their natural transpiration.



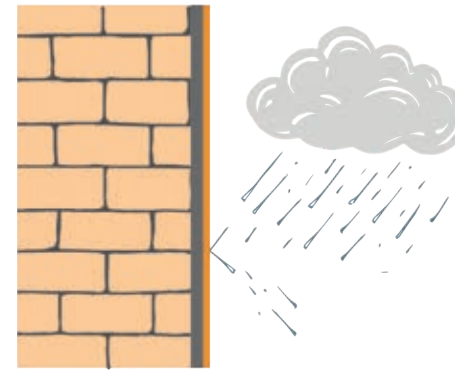
Acrylic emulsion



Siloxane emulsion

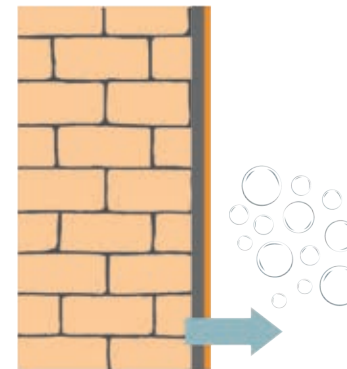
Two microscope photographs showing the microporous structure of a traditional acrylic paint compared to a siloxane paint.

## WATER REPELLENCY AND IMPERMEABILITY



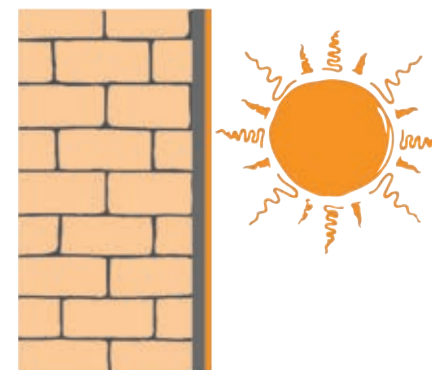
CAP Arreghini siloxane resin paints have a dual action of water repellency and impermeability that allows the masonry to always remain intact and dry, even in aggressive climatic conditions, characterised by frequent rain and freeze-thaw cycles. The siloxane resin coats the surface, creating a microscopic grid over which rainwater runs off and does not penetrate into the wall, keeping it dry and protected from mould and algae.

## BREATHABILITY AND WATER VAPOUR PERMEABILITY



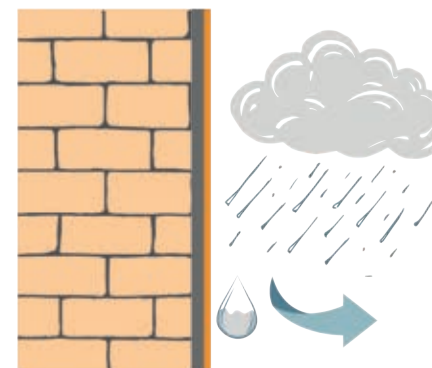
CAP Arreghini siloxane paints are breathable because, thanks to their microporous structure, they allow humidity, in the form of water vapour, to escape from the wall, preventing the formation of swelling in the plaster and any detachment of the same.

## VERSATILE AND DURABLE



CAP Arreghini siloxane paints can be applied to any type of new or old substrate and can be used for the protection or maintenance of coating systems. Their high quality enables the colour to withstand the ultraviolet and infrared rays of sunlight and to retain its original aesthetic beauty over long periods, reducing the need to repaint surfaces and thus lowering maintenance costs.

## SELF-CLEANING AND LOW DIRT RETENTION



Unlike normal paints, CAP Arreghini siloxane paints do not soften under the action of the sun's rays and prevent dust and dirt from adhering to the substrate, thus facilitating their total removal by the rains. For this reason they are the ideal solution for interventions on houses or historical buildings located in city centres or densely populated areas.



# SILOXANIC AND ACRYLIC- SILOXANIC PRODUCTS

CAP Arreghini's siloxane and acrylsiloxane paints offer optimum results for all types of application and are the ideal solution for major work on new buildings or those undergoing renovation.

Their technology creates a water-resistant and at the same time vapour-permeable barrier that prevents the accumulation of moisture. These characteristics provide excellent durability and decorative value, ensuring the stability and longevity of the façades.

In order for this barrier to work properly, it is necessary, in addition to a careful choice of the product, to adequately prepare the surface, which, if not done out correctly, can compromise the success of the work and its durability. It is therefore important to check in advance the condition of the object to be protected and its surroundings, carrying out the necessary restoration work and eliminating degradation agents such as efflorescence, mould and old paint.





# SIL2000 ACTIVE

ELASTIC, SELF-CLEANING, SILOXANE, ANTI-MOULD, ANTI-ALGAE WATER PAINT FOR EXTERIORS



Matt, anti-mould, anti-algae, siloxane resin-based paint for exceptional protection and colour fastness on new or maintained substrates. Its high quality provides the right balance of water repellency and water vapour permeability to ensure that the masonry stays dry, even in extremely wet conditions. The high water repellency also ensures strong resistance to the destructive action of rain. Its composition makes it possible to fill and even out the substrate with a compact, homogeneous finish of high aesthetic value. It is therefore suitable for decorating and protecting new buildings or those undergoing renovation from atmospheric agents, even with intense colours.

- RESISTANCE TO ATMOSPHERIC AGENTS
- WATER RESISTANCE
- WATER VAPOUR DIFFUSION
- RESISTANCE TO DIRT PICK-UP
- FILLING AND COVERING POWER

# SIL96 ACTIVE

ANTI-MOULD, ANTI-ALGAE, SILOXANE WATER PAINT FOR EXTERIORS



Opaque, anti-mould, anti-algae, siloxane resin-based paint that provides excellent water repellency and a long-lasting barrier against dirt. Its excellent characteristics give the substrate a high level of water vapour impermeability and breathability, allowing the masonry to remain dry and intact over time, making it suitable for application as a finish on dehumidifying systems. The presence of lamellar aggregates inside the paint allows for a smooth and uniform finish of high aesthetic value. Thanks to its high quality, it is ideal for the decoration and weather protection of new buildings or those undergoing renovation, even with intensive colours.

- RESISTANCE TO ATMOSPHERIC AGENTS
- WATER RESISTANCE
- WATER VAPOUR DIFFUSION
- COVER
- MATT FINISH

# SIL96 QUARZO ACTIVE

ANTI-MOULD, ANTI-ALGAE, SILOXANE FILLER  
PAINT FOR EXTERIORS



Anti-mildew, anti-algae, siloxane resin-based filling paint that provides excellent water repellency and a long-lasting barrier against dirt. It features the right balance of water impermeability and vapour diffusion resistance to ensure the breathability required to keep walls dry and intact over time, making it suitable for application as a finish on dehumidifying systems. The quartz powder it contains allows it to fill the substrate, resulting in a compact, homogeneous finish that, thanks to its high opacity, ensures adequate masking of plaster imperfections. In colours with a light reflectance value LRV>25, it is also suitable for maintenance painting of exterior insulation systems.

- RESISTANCE TO ATMOSPHERIC AGENTS
- WATER VAPOUR DIFFUSION
- WATER RESISTANCE
- FILLING AND COVERING POWER
- MATT FINISH

# SIL MATT ACTIVE

ANTI-MOULD, ANTI-ALGAE, ANTI-FILLING, ACRYLSILOXANE  
MATT EXTERIOR PAINT



Anti-mould, anti-algae, filler paint, based on acrylic and siloxane resins, which provides good colour protection and resistance outdoors. It has the right balance of water impermeability and vapour diffusion resistance to provide the breathability needed to keep walls dry. Its grain size allows it to fill the substrate, resulting in a compact and homogeneous finish. Thanks to its high opacity, it ensures adequate masking of plaster imperfections. Because of its excellent price-performance ratio, it is the ideal solution for large-scale maintenance work on insulation systems.

- RESISTANCE TO ATMOSPHERIC AGENTS
- WATER RESISTANCE
- WATER VAPOUR DIFFUSION
- FILLING AND COVERING POWER
- MATT FINISH



# SILVELATURA

SILOXANE GLAZE



A siloxane resin-based water paint that provides high protection and colour fastness outdoors by creating a barrier against dirt. Its high quality provides the right balance of water impermeability and vapour diffusion resistance to ensure the breathability needed to keep the masonry dry and intact over time. It is therefore suitable for application as a finish on dehumidifying systems. It is designed for use both indoors and outdoors for special decorations and glazes with an uneven colour effect on new or refurbished substrates.

- WEATHER RESISTANCE
- WATER VAPOUR DIFFUSION
- WATER IMPERMEABILITY
- WASHABILITY
- MATT FINISH

# SIL96 TEX ACTIVE

ANTI-MOULD, ANTI-ALGAE, ACRYLIC-SILOXANE FINISH FOR EXTERIORS



Filling wall finish for exteriors, anti-mould, anti-algae formulated with acrylic-siloxane resins that guarantee good protection and colour resistance on the outside. The product is characterized by a balance between the resistance to water penetration and water vapour diffusion, making it breathable so that the walls are kept dry. Thanks to the opacity and high hiding power of the product, any imperfections, uneven and irregular surfaces, repairs to exterior surfaces of historic buildings or to areas that are particularly exposed to weathering are filled and covered to deliver an even and compact finish. Given the excellent quality-price ratio, it is the ideal solution for large works.

- WEATHER RESISTANCE
- WATER VAPOUR DIFFUSION
- WATER IMPERMEABILITY
- HIGH HIDING POWER
- MATT FINISH



# SILINTONACHINO ACTIVE

ANTI-MOULD, ANTI-ALGAE, FIBRE-REINFORCED, COMPACT-EFFECT SILOXANE WALL COATING



Fibre-reinforced, anti-mould and anti-algae thick coating, based on siloxanic resins composed of selected grain quartz available in different grain sizes (1 mm, 1.2 mm, 1.5 mm). Its quality provides external façades with high protection and colour fastness, breathability and water repellence, making it suitable for dehumidifying systems and the restoration of buildings of historical interest. The compact, homogeneous finish ensures a high degree of masking of plaster imperfections and therefore the product, in colours with a light reflectance value >25, is especially suitable for painting and maintaining thermal insulation systems.

- RESISTANCE TO ATMOSPHERIC AGENTS
- WATER IMPERMEABILITY
- WATER VAPOUR DIFFUSION
- MICRO-CRACKING RESISTANCE
- EXCELLENT MASKING POWER

# SILOXCAP ACTIVE

COMPACT EFFECT, ANTI-MOULD, ANTI-ALGAE, FIBRE-REINFORCED ACRYLSILOXANE WALL COATING



Thick, fibre-reinforced, acrylsiloxane resin-based, anti-mould and anti-algae coating, composed of selected grain quartz available in different grain sizes (1 mm, 1.2 mm, 1.5 mm). Its quality provides the right balance of water impermeability and resistance to water vapour diffusion, keeping substrates dry and intact over time and creating a barrier against dirt. Thanks to its composition, a homogeneous surface without irregularities and imperfections can be obtained with one coat, making it, in colours with a light reflection value LRV >25, suitable for painting and maintaining thermal insulation systems.

- RESISTANCE TO WEATHERING
- WATER VAPOUR DIFFUSION
- RESISTANCE TO MICRO CRACKING
- BARRIER AGAINST MOULD AND DIRT
- EXCELLENT MASKING POWER



# SILOMUR W

TRANSPARENT, WATER-BASED SILOXANE WATER REPELLENT  
FOR EXTERIOR AND INTERIOR USE



Transparent, siloxane resin-based, water-based protective water repellent that renders surfaces highly water-repellent and breathable, providing high moisture protection and weather resistance. Thanks to its characteristics, it penetrates deep into the substrate creating an invisible barrier without causing colour or gloss variations, thus maintaining the original aesthetic appearance of the façades. Its water-repellent effect helps to keep the treated surface clean for a long time. It is ideal for the hydrophobic treatment of absorbent mineral and stone substrates such as exposed bricks, plaster, stone, cement and concrete substrates and for the external protection of lime finishes such as Marmorino and Travertino.

- HIGH WATER REPELLENCY
- HIGH BREATHABILITY
- SELF-CLEANING
- ODOURLESS
- RETAINS ITS ORIGINAL APPEARANCE

# SILOMUR

TRANSPARENT WATER REPELLENT SILOXANE  
FOR EXTERIOR AND INTERIOR USE



Solvent-based, transparent, siloxane resin-based protective water repellent, particularly suitable for making wall surfaces highly water-repellent and at the same time permeable to water vapour. Thanks to its high penetrating power, it creates a protective barrier on the surface, leaving the permeability to water vapour unaffected, while providing high protection against humidity and exceptional resistance to weathering. It is ideal for protecting new structures on alkaline substrates such as concrete and fibre cement, bricks and natural stone, without altering their original appearance.

- HIGH WATER REPELLENCY
- HIGH BREATHABILITY
- WEATHER RESISTANCE
- SELF-CLEANING
- RETAINS ORIGINAL APPEARANCE



TECHNICAL DATA

SILOXANIC AND ACRYLSILOXANIC PAINTS AND COATINGS					
	COLOUR SWATCHES	YIELD	DILUTION	APPLICATION	ADDITIONAL COATING
SIL2000 ACTIVE	Area 115 Spazio 100 Tucano NCS	10-12 m²/l per layer	10-20% with water 0-10% with water (spray)	Roller Brush Airless	4-6 h
SIL96 ACTIVE	Area 115 Spazio 100 Tucano NCS	9-11 m²/l per layer	15-30% with water 0-10% with water (spray)	Roller Brush Airless	4-6 h
SIL96 QUARZO ACTIVE	Area 115 Spazio 100 Tucano NCS	8-10 m²/l per layer	15-30% with water	Roller Brush	4-6 h
SIL MATT ACTIVE	Area 115 Spazio 100 Tucano NCS	8-10 m²/l per layer	15-30% with water	Roller Brush	4-6 h
SILVELATURA	Kalahari colour swatch	15-18 m²/l per layer	0-35% with water	Roller Brush Sponge trowel Glove	5-8 h
SIL96 TEX ACTIVE	Tucano (only pastel shades)	2-2,5 m²/kg per layer	0-10% with water	Roller	5 h
SILINTONACHINO ACTIVE	Tucano	1000: 1,8 kg/m² 1200: 2,3 kg/m² 1500: 2,8 kg/m²	0-3% with water	Steel and plastic trowel	24 h
SILOXAP ACTIVE	Tucano	1000: 1,8 kg/m² 1200: 2,3 kg/m² 1500: 2,8 kg/m	0-3% with water	Steel and plastic trowel	24 h
SILOMUR W	-	3,3-7 m²/l per layer	ready to use	Roller Brush Airless	Prodotto da applicare in un unico strato bagnato su bagnato
SILOMUR	-	5-6 m²/l per layer	ready to use	Roller Brush Airless	5-8 h

For the technical characteristics of the products mentioned, please refer to the specific technical data sheet available on the website [www.caparreghini.it](http://www.caparreghini.it) or by requesting it from your local CAP Arreghini dealer.

REFERENCE



Palazzo residenziale, Bisceglie (BT)  
Painting system: Surface preparation: **PRIMER TOP** - Finish: **SIL MATT ACTIVE**



# PRIMERS AND WALL PRIMERS FOR SILOXANE SYSTEMS



The ideal protective system reduces water ingress into the walls and guarantees breathability, while ensuring water repellency and water vapour permeability. A fundamental role in the correct functioning of the painting cycle is played by the primer, which constitutes, after a careful diagnosis of the substrate to be treated, the fundamental phase in the preparation of the surface before the application of the siloxane paints.

On new façades or those undergoing maintenance, after checking that the surface is homogeneous and that the alkalinity and water content are within acceptable values, the substrate can be insulated by choosing the most suitable primer, depending on the treatment system identified.

CAP Arreghini offers a wide range of primers and wall primers suitable for siloxane systems.

The primers **MURISOL W**, **MURISOL**, **PRIMER TOP**, **SILOFIX**, unlike **UNIFIX** as a bonding primer, are all non-saponifiable, highly penetrating products that prevent the instantaneous absorption of most of the water in the paint. Too high an absorption rate would compromise the normal film formation and paints applied in this way would lose most of their characteristics, such as resistance to washing, chalking and maintenance of colour tone.





# MURISOL W

"HYDROPLIOLITE" PIGMENTED WATER-BASED  
WALL PRIMER FOR EXTERIOR AND INTERIOR USE

Water-based pigmented wall primer, formulated with a special technology based on Hydropliolite resins, it has a high degree of penetration, excellent adhesion on different types of substrate and a high insulating and consolidating effect. Its quality guarantees high water vapour permeability and resistance to alkaline substrates, giving the surface an initial colouration that increases the coverage of subsequent finishing coats, thus reducing the cost and time of the entire painting system.

- HIGH CONSOLIDATION POWER
- HIGH PENETRATION
- CAN BE OVERPAINTED WITH ALL PRODUCTS
- HIGH YIELD

# MURISOL

PIGMENTED SOLVENT-BASED WALL PRIMER  
FOR EXTERIOR USE



Solvent-based pigmented wall primer, formulated with a special Pliolite-based technology, able to guarantee excellent penetration capacity that consolidates and isolates all types of substrate, even in difficult conditions during maintenance, enabling optimal adhesion and also absorption of subsequent finishing coats. Its composition guarantees high breathability and resistance to alkaline substrates, giving the surface an initial colouration that saves layers in the application cycle, thus reducing the time and cost of the entire painting system.

- HIGH YIELD
- INCREASES COVERING POWER
- EVENS OUT ABSORPTION
- LOW VOC

# SILOFIX

TRANSPARENT SILOXANE WALL PRIMER  
FOR EXTERIOR USE

Water-thinnable, colourless, siloxane resin-based wall primer with excellent insulating capacity and adhesion on all wall surfaces. Thanks to its high penetrating power, it can be applied in a single coat on old paints, alkaline substrates, concrete and fibre cement, with high adhesion and absorption of subsequent coats.

- HIGH ADHESION ON VARIOUS SUBSTRATES
- HIGH INSULATING POWER
- CAN BE OVERPAINTED WITH ALL PRODUCTS
- HIGH YIELD

# UNIFIX

UNIFORMING AND BONDING PRIMER F  
OR EXTERIOR AND INTERIOR USE



Pigmented wall primer available in fine or coarse-grained versions, formulated with dispersion resins and aggregates of various grain sizes. It can be used in one or more coats, to even out surfaces with different types of plaster, whether new or treated with old paint, or to roughen smooth surfaces of plasterboard, stucco or gypsum substrates. Available in fine grain 0.06 - 0.2 mm and coarse grain 0.1 - 0.35 mm. Unifix grosso is a LEED certified product.

- HIGH UNIFORMING POWER
- INCREASES THE COVERING
- POWER CAN BE APPLIED OVER ANY FINISH
- EVENS OUT ABSORPTION



# PRIMER TOP

PIGMENTED ACRYLSILOXANE FILLER WALL PRIMER



Water-based pigmented wall primer, based on acrylsiloxanic resins, characterised by a high filling power that makes it possible, in just one coat, to even out irregularities in the façade, adequately preparing the surface for subsequent finishing layers. Its acrylic-siloxane nature makes it possible to obtain highly breathable painting systems with a high degree of water vapour diffusion. Ideal for preparing the substrate prior to applying the coatings of the THERMOCAP coating system

- WATER VAPOUR DIFFUSION
- HIGH CONSOLIDATION AND SMOOTHING POWER
- EXCELLENT MASKING POWER
- INCREASES THE COVERING POWER

## APPLICATION SYSTEMS: PRODUCT SELECTION GUIDE

PAINTING SYSTEM ON NEW OR PREVIOUSLY PAINTED PLASTER OF VARIOUS KINDS						
		STEP 1	STEP 2	STEP 3	STEP 4	STEP 5
SUBSTRATE STATUS	ASPECT TO BE ADDRESSED	SURFACE PREPARATION	SURFACE RESTORATION	I LAYER	II LAYER	III LAYER
new	-	clean with hydro-wash	-	MURISOL MURISOL W SILOFIX	SIL2000 ACTIVE SIL96 ACTIVE SIL96 QUARZO ACTIVE SIL MATT ACTIVE SIL96 TEX ACTIVE	SIL2000 ACTIVE SIL96 ACTIVE SIL 96 QUARZO ACTIVE SIL MATT ACTIVE SILVELATURA SIL96 TEX ACTIVE
maintenance	old paints	remove loose parts, clean with water wash	restore plaster	MURISOL MURISOL W SILOFIX	SIL2000 ACTIVE SIL96 ACTIVE SIL96 QUARZO ACTIVE SIL MATT ACTIVE SIL96 TEX ACTIVE	SIL2000 ACTIVE SIL96 ACTIVE SIL 96 QUARZO ACTIVE SIL MATT ACTIVE SILVELATURA SIL96 TEX ACTIVE
	presence of mould	clean with water wash, sanitise with B1	-	MURISOL MURISOL W SILOFIX	SIL2000 ACTIVE SIL96 ACTIVE SIL96 QUARZO ACTIVE SIL MATT ACTIVE SIL96 TEX ACTIVE	SIL2000 ACTIVE SIL96 ACTIVE SIL 96 QUARZO ACTIVE SIL MATT ACTIVE SILVELATURA SIL96 TEX ACTIVE
	on thick coatings	remove loose parts, clean with water wash	restore the coating missing	MURISOL W SILOFIX	SIL2000 ACTIVE SIL96 ACTIVE SIL96 QUARZO ACTIVE SIL MATT ACTIVE SIL96 TEX ACTIVE	SIL2000 ACTIVE SIL96 ACTIVE SIL 96 QUARZO ACTIVE SIL MATT ACTIVE SILVELATURA SIL96 TEX ACTIVE



PAINTING SYSTEM ON NEW OR ALREADY TREATED, RESTORED, UNIFORMED PLASTER OF VARIOUS KINDS							
		STEP 1	STEP 2	STEP 3	STEP 4	STEP 5	STEP 6
SUBSTRATE STATUS	ASPECT TO BE ADDRESSED	SURFACE PREPARATION	SURFACE RESTORATION	I LAYER	II LAYER	III LAYER	IV LAYER
new	-	clean with hydro-wash	-	UNIFIX FINE/ GROSSO	SIL2000 ACTIVE SIL96 ACTIVE SIL96 QUARZO ACTIVE SIL MATT ACTIVE	SIL2000 ACTIVE SIL96 ACTIVE SIL 96 QUARZO ACTIVE SIL MATT ACTIVE SILVELATURA	-
				MURISOL W PRIMER TOP	SIL96 TEX ACTIVE	SIL96 TEX ACTIVE	-
maintenance	old paints	remove loose parts, clean with water wash	restore plaster	*MURISOL *MURISOL W *SILOFIX	UNIFIX FINE/ GROSSO	SIL2000 ACTIVE SIL96 ACTIVE SIL96 QUARZO ACTIVE SIL MATT ACTIVE	SIL2000 ACTIVE SIL96 ACTIVE SIL 96 QUARZO ACTIVE SIL MATT ACTIVE SILVELATURA
				MURISOL W PRIMER TOP	SIL96 TEX ACTIVE	SIL96 TEX ACTIVE	-
	presence of mould	clean with water wash, sanitise with B1	-	*MURISOL *MURISOL W *SILOFIX	UNIFIX FINE/ GROSSO	SIL2000 ACTIVE SIL96 ACTIVE SIL96 QUARZO ACTIVE SIL MATT ACTIVE	SIL2000 ACTIVE SIL96 ACTIVE SIL 96 QUARZO ACTIVE SIL MATT ACTIVE SILVELATURA
				MURISOL W PRIMER TOP	SIL96 TEX ACTIVE	SIL96 TEX ACTIVE	-
	on thick coatings	remove loose parts, clean with water wash	restore the coating missing	MURISOL W SILOFIX	SIL2000 ACTIVE SIL96 ACTIVE SIL96 QUARZO ACTIVE SIL MATT ACTIVE SIL96 TEX ACTIVE	SIL2000 ACTIVE SIL96 ACTIVE SIL 96 QUARZO ACTIVE SIL MATT ACTIVE SILVELATURA SIL96 TEX ACTIVE	-

\* if necessary consolidation of the substrate

Products mentioned:  
- B1 Anti-mould wall sanitiser for interior and exterior use

PAINTING SYSTEM ON NEW OR ALREADY TREATED PLASTER OF VARIOUS KINDS, RESTORED, TO BE EVENED OUT - THICK COATINGS						
		STEP 1	STEP 2	STEP 3	STEP 4	
SUBSTRATE STATUS	ASPECT TO BE ADDRESSED	SURFACE PREPARATION	SURFACE RESTORATION	I LAYER	II LAYER	
new	-	clean with hydro-wash	-	MURISOL W PRIMER TOP	SILINTONACHINO ACTIVE SILOXCAP ACTIVE	
maintenance	old paints	remove loose parts, clean with water wash	restore plaster	MURISOL W PRIMER TOP	SILINTONACHINO ACTIVE SILOXCAP ACTIVE	
	presence of mould	clean with water wash, sanitise with B1	-	MURISOL W PRIMER TOP	SILINTONACHINO ACTIVE SILOXCAP ACTIVE	
	on thick coatings	remove loose parts, clean with water wash	restore the coating missing	MURISOL W PRIMER TOP	SILINTONACHINO ACTIVE SILOXCAP ACTIVE	
PAINTING SYSTEM ON DEHUMIDIFIED PLASTERS						
		STEP 1	STEP 2	STEP 3	STEP 4	STEP 5
SUBSTRATE STATUS	ASPECT TO BE ADDRESSED	SURFACE PREPARATION	SURFACE RESTORATION	I LAYER	II LAYER	III LAYER
new	-	-	-	MURISOL MURISOL W SILOFIX	SIL2000 ACTIVE SIL96 ACTIVE SIL96 QUARZO ACTIVE SIL MATT ACTIVE SIL96 TEX ACTIVE	SIL2000 ACTIVE SIL96 ACTIVE SIL 96 QUARZO ACTIVE SIL MATT ACTIVE SILVELATURA SIL96 TEX ACTIVE
TRANSPARENT PROTECTION SYSTEM ON NEW OR RESTORED CONCRETE, FIBRE CEMENT, BRICK, NATURAL STONE STRUCTURES						
		STEP 1	STEP 2	STEP 3	STEP 4	
SUBSTRATE STATUS	ASPECT TO BE ADDRESSED	SURFACE PREPARATION	SURFACE RESTORATION	I LAYER	II LAYER	
new	-	clean with hydro-wash	-	SILOMUR SILOMUR W (b/w)	SILOMUR	
manutenzione	presence of mould	clean with water wash, sanitise with B1	-	SILOMUR SILOMUR W (b/w)	SILOMUR	



# REFERENCE



Left - Palazzo residenziale, Firenze (FI)  
Painting system: Surface preparation: **PRIMER TOP** - Finish: **SIL96 QUARZO** ACTIVE  
Right - Hotel La Pergola, Lignano Sabbiadoro (UD)  
Painting system: Surface preparation: **MURISOL W** - Finish: **SIL2000** ACTIVE



Top - Palazzo residenziale, Trieste (TS)  
Painting system: Surface preparation: **SILOFIX** - Finish: **SIL96** ACTIVE  
Bottom - Villa privata, Lignano Sabbiadoro (UD)  
Painting system: Transparent protective finish: **SILOMUR W**



# legend

## TECHNICAL INDICATIONS



*can contribute to the LEED  
score of the building*



*certified product*

This catalogue is for information purposes only and does not replace product data sheets. For the technical characteristics of the above-mentioned products and further information on the application cycle, please refer to the specific technical data sheet available on the website [www.caparreghini.it](http://www.caparreghini.it) or request it from your local CAP Arreghini dealer.





**CAP ARREGHINI SpA**

ITALIAN PAINTS SINCE 1950

V.le Pordenone, 80 - 30026 PORTOGRUARO (VE)

Tel. +39 0421 278111 - Fax +39 0421 278115

info@caparregghini.it - www.caparregghini.it

*Azienda con Sistema Certificato*

UNI EN ISO 9001 - UNI EN ISO 14001

